

SALOME

FOUR BEDROOM DETACHED HOME



CLENDINNING

at maghon park

SALOME

FOUR BEDROOM DETACHED HOME

Attractively Designed and Deceptively Spacious Four Bed Detached Residences.

- Gas Heating
- Double Glazing
- Ready to move into
- Attached Garage
- Brick Paviour Driveway
- Mature Residential Setting

Dimensions	Feet	Metres
Kitchen	10'1"/9'3"	3.07/2.82
Dining Room	13'8"/10'0"	4.16/3.05
Living Room	14'4"/12'3"	4.37/3.73
Utility	10'1"/5'3"	3.07/1.60
Bedroom 1	15'3"/11'4"	4.65/3.45
Bedroom 2	13'4"/5'10"	4.06/1.78
Bedroom 3	13'1"/12'5"	3.99/3.78
Bedroom 4	10'2"/7'7"	3.10/2.31
Bathroom	7'10"/6'11"	2.39/2.11
Total Area	1467ft ²	136m ²
Garage	20'10"/9'0"	6.35/2.74

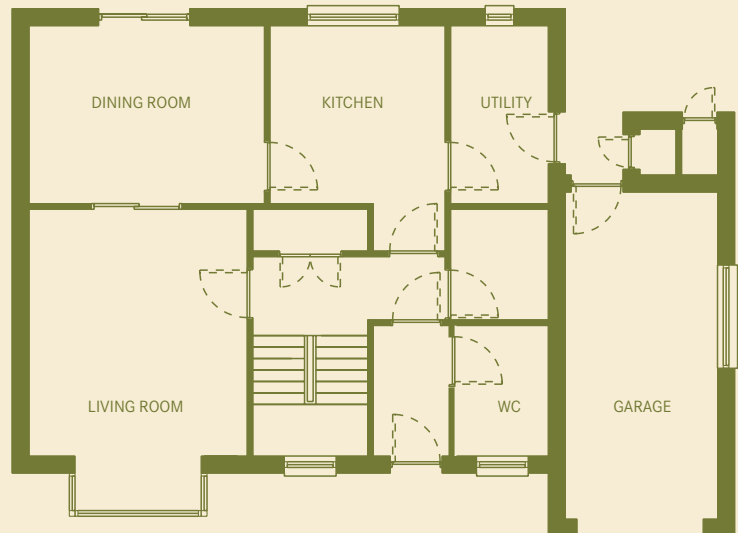
Site Plan Colour Reference:



All dimensions are approximate and are taken at widest points. The measurements above were taken from No. 20 Clendinning Avenue. Other Salome house type measurements may vary slightly.



FIRST FLOOR



GROUND FLOOR