

# KENNELLS

---

FOUR BEDROOM SEMI-DETACHED HOME



# CLENDINNING

---

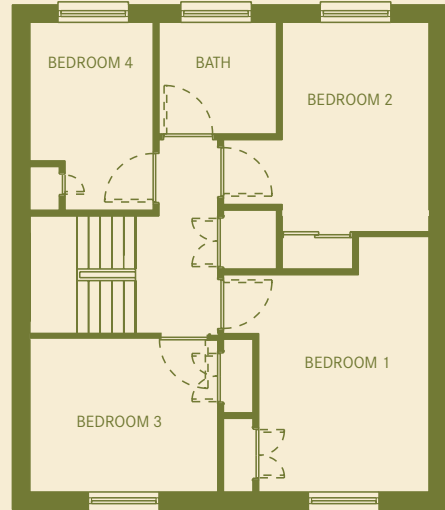
at maghon park

# KENNELLIS

## FOUR BEDROOM SEMI-DETACHED HOME

Deceptively Spacious  
Four Bed Semi Detached  
Residences with Front and  
Rear gardens laid in lawns.

- Gas Heating
- Double Glazing
- Ready to move into
- Attached Garage
- Brick Paviour Driveway
- Mature Residential Setting



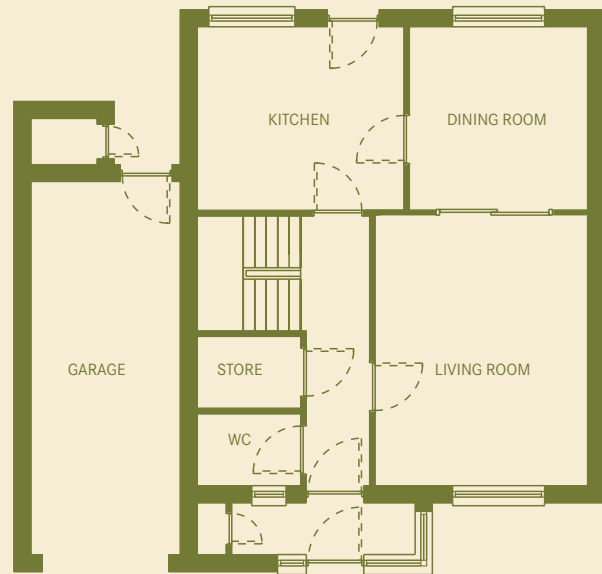
FIRST FLOOR

Dimensions	Feet	Metres
Kitchen	11'7"/10'6"	3.53/3.20
Dining Room	10'6"/10'2"	3.20/3.10
Living Room	15'5"/12'0"	4.70/3.66
Store	5'11"/5'7"	1.80/1.70
Bedroom 1	14'7"/9'3"	4.44/2.82
Bedroom 2	11'4"/8'9"	3.45/2.67
Bedroom 3	10'4"/9'3"	3.15/2.82
Bedroom 4	10'6"/6'10"	3.20/2.08
Bathroom	6'5"/6'1"	1.95/1.85
Total Area	1204ft <sup>2</sup>	112m <sup>2</sup>
Garage	21'5"/9'3"	6.53/2.82

Site Plan Colour Reference:



All dimensions are approximate and are taken at widest points. The measurements above were taken from No. 27 Clendinning Avenue. Other Kennellis house type measurements may vary slightly.



GROUND FLOOR